

Vision

A strong future for the Latrobe Valley and Gippsland Region

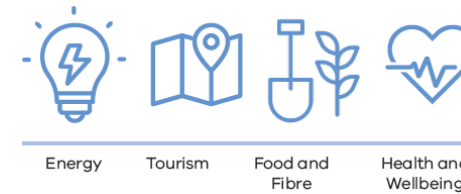
Purpose

To be a catalyst for place based transition, transformation and long term sustainable prosperity



Integrated actions to advance regional strengths

- Enable collaborative networks with shared intent through multi-level governance and leadership
- Identify and advance areas of competitive advantage
- Partner to develop knowledge and skills that align with regional strengths
- Facilitate the development and activation of places, spaces and people



Place based model



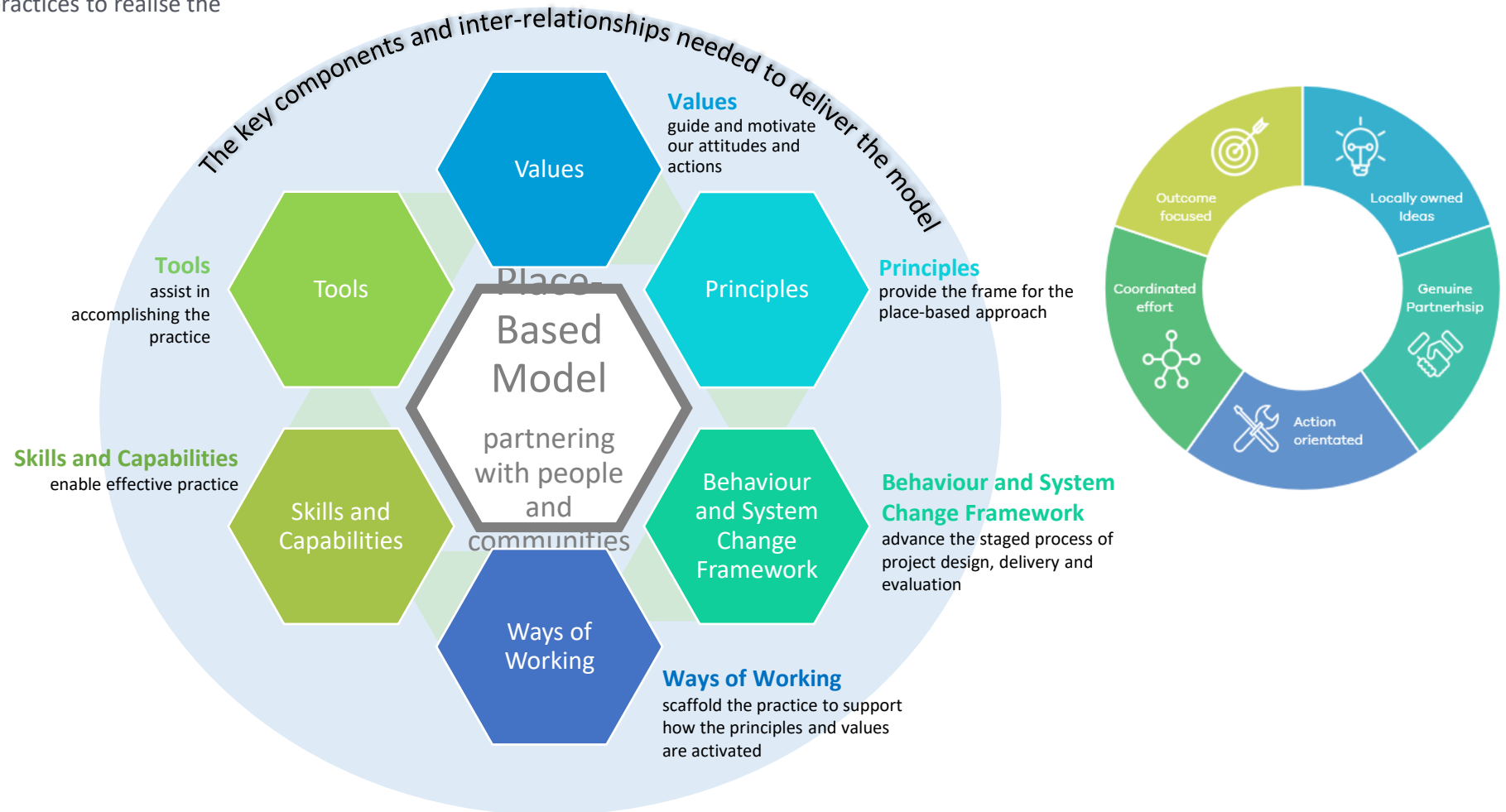
Outcomes

- Everyone has the opportunity to contribute to and share in Gippsland's prosperity
- Gippsland is innovative, competitive, adaptive and diverse for the benefit of all
- Gippsland's natural and built environment is sustainable, safe and attractive
- Gippsland communities are connected, active and vibrant

A model to support the implementation of LVA's place-based approach

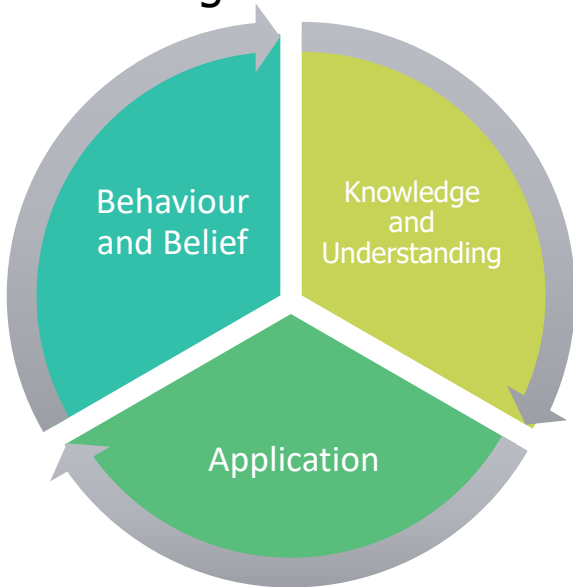
How

- identifies the key components and the inter-relationships to deliver a place-based approach
- provides how we operationalise the practices to realise the why and what (get it done)

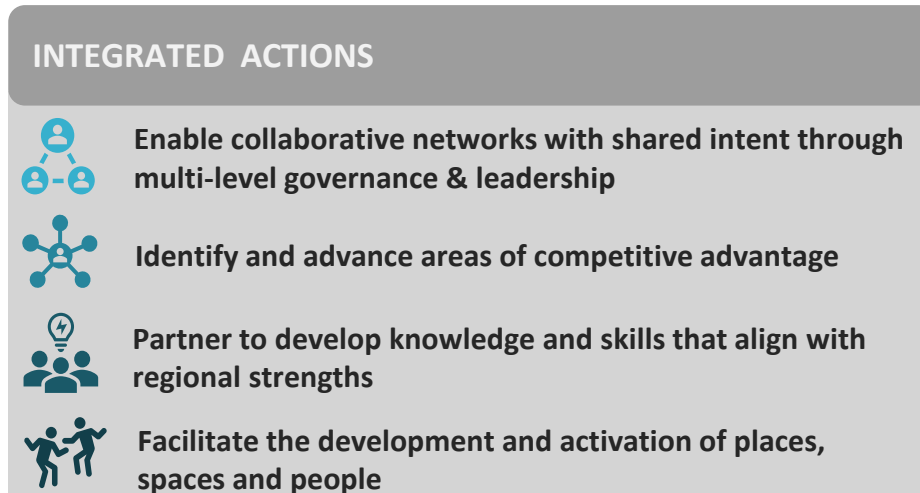


To be a catalyst for place based transition, transformation and long term sustainable prosperity

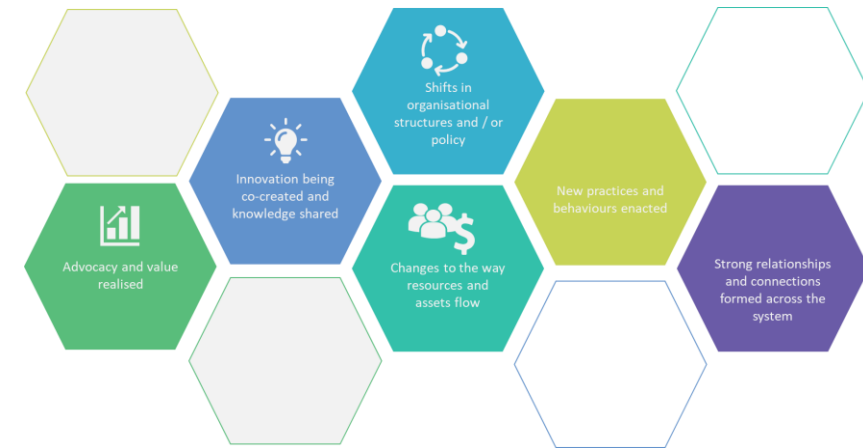
Developing Theory of Actions around Behaviour and System Change Framework



Focusing on four integrated actions



Measuring the change across six impact domains



to advance the regional strengths



Energy



Tourism



Food and Fibre



Health and Wellbeing

Conditions for System Transformation

