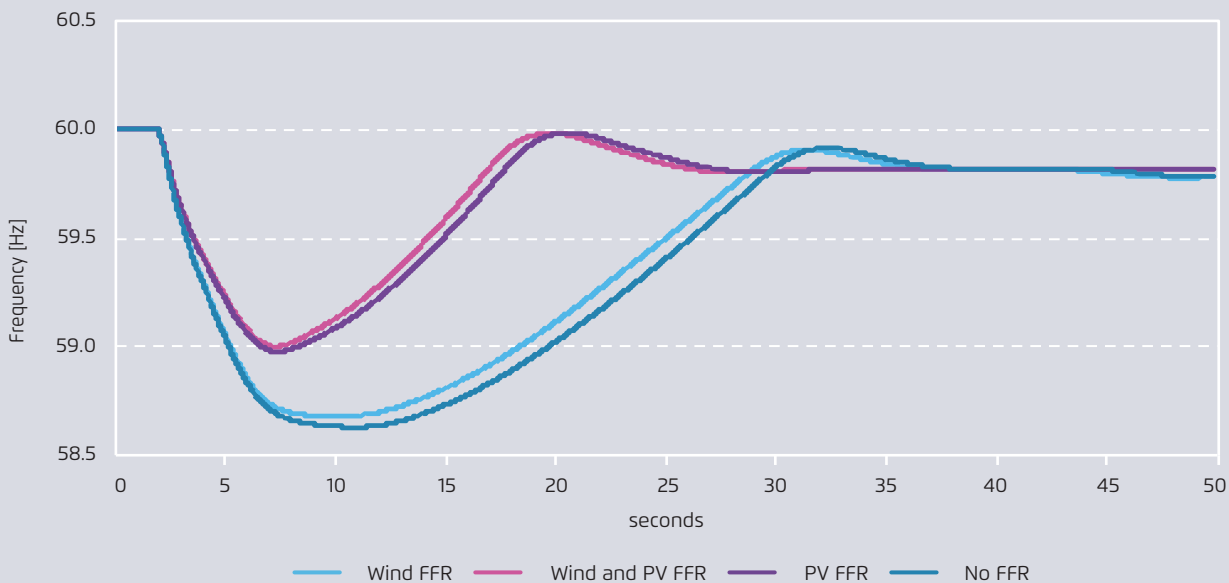


Frequency response by FFR technology after a 1,500 MW generation loss
in western Japan in the higher RE scenario

Figure 13



No.	Snapshots	RoCoF (Hz/s)				Frequency nadir (Hz)			
		No FFR	Wind FFR	PV FFR	Wind & PV FFR	No FFR	Wind FFR	PV FFR	Wind & PV FFR
S1	Low_VRES	-0.064	-0.061	-	-	59.824	59.829	-	-
S2	Med_VRES	-0.111	-0.106	-	-	59.727	59.734	-	-
S2b	High_VRES high load	-0.112	-0.109	-	-	59.534	59.543	-	-
S3	High_VRES low load	-0.24	-0.232	-0.186	-0.18	58.632	58.682	58.978	59.002