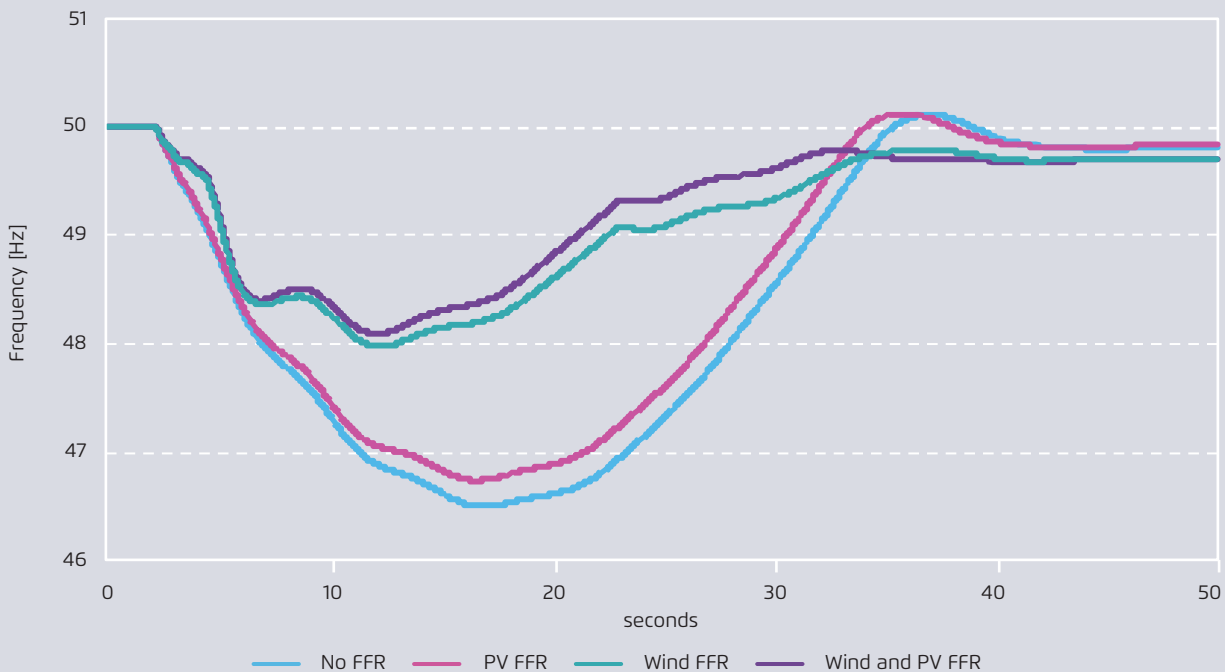


Frequency response by FFR technology after a 1,500 MW generation loss in eastern Japan in the higher RE scenario

Figure 11



No.	Snapshots	RoCoF (Hz/s)				Frequency nadir (Hz)			
		No FFR	Wind FFR	PV FFR	Wind & PV FFR	No FFR	Wind FFR	PV FFR	Wind & PV FFR
S1	Low_VRES	-0.063	-0.046	-	-	49.439	49.617	-	-
S2	Med_VRES	-0.079	-0.072	-	-	49.213	49.32	-	-
S2b	High_VRES high load	-0.146	-0.135	-	-	48.626	48.68	-	-
S3	High_VRES low load	-0.342	-0.222	-0.324	-0.208	46.498	47.974	46.739	48.091