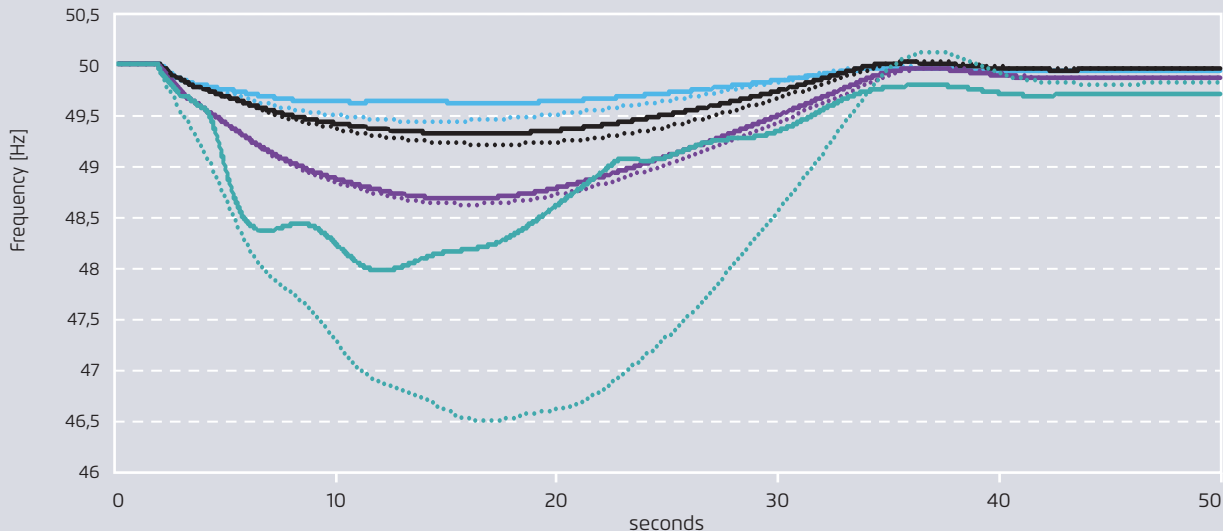


Frequency response after a 1,500 MW generation loss in eastern Japan
in the higher RE scenario, with and without wind FFR

Figure 10



- Low vRES (S1) without wind FFR
- mid vRES (S2) without wind FFR
- high vRES, low load (S3) without wind FFR
- high vRES, high load (S2b) without wind FFR

- Low vRES (S1) with wind FFR
- mid vRES (S2) with wind FFR
- high vRES, low load (S3) with wind FFR
- high vRES, high load (S2b) with wind FFR